

Installation Guide: Easy Rider Speed Bump

Components:

- Easy Rider speed bumps
- ½" rebar spikes or lag bolts with metal shields


What You Need

- Gloves, safety glasses
- Traffic cones, drums or barricades for securing the site
- Mallet
- Heavy duty electric drill
- ½" masonry bit and, if installed with the lag bolts: a masonry bit required for the metal shields
- A drive socket and a power tool for installation of the lag bolts

The flexible design of the Easy Rider speed bump allows the product to conform to the contour of uneven road surfaces and can be installed on both asphalt and concrete.



Installation Instructions for Asphalt:

Installation of Easy Rider Speed Bumps with Spikes (Recommended for asphalt surfaces):

STEP 1:	Drill ½" diameter holes in the asphalt through the product's holes.	
STEP 2:	Drive ½" rebar spike (14" long) through the holes in the product.	

Installation Instructions for Concrete:

Installation of Easy Rider Speed Bumps with lag bolts and metal shields (Recommended for concrete surfaces):

STEP 1:	Use ½" or 5/8 lag bolts (5.5" long).	
STEP 2:	Drill ½" diameter pilot holes through the product's installation holes.	
STEP 3:	Remove the product; re-drill the holes for the diameter and depth required by the metal shields.	
STEP 4:	Install the metal shields, re-position the product and bolt with lag bolts.	

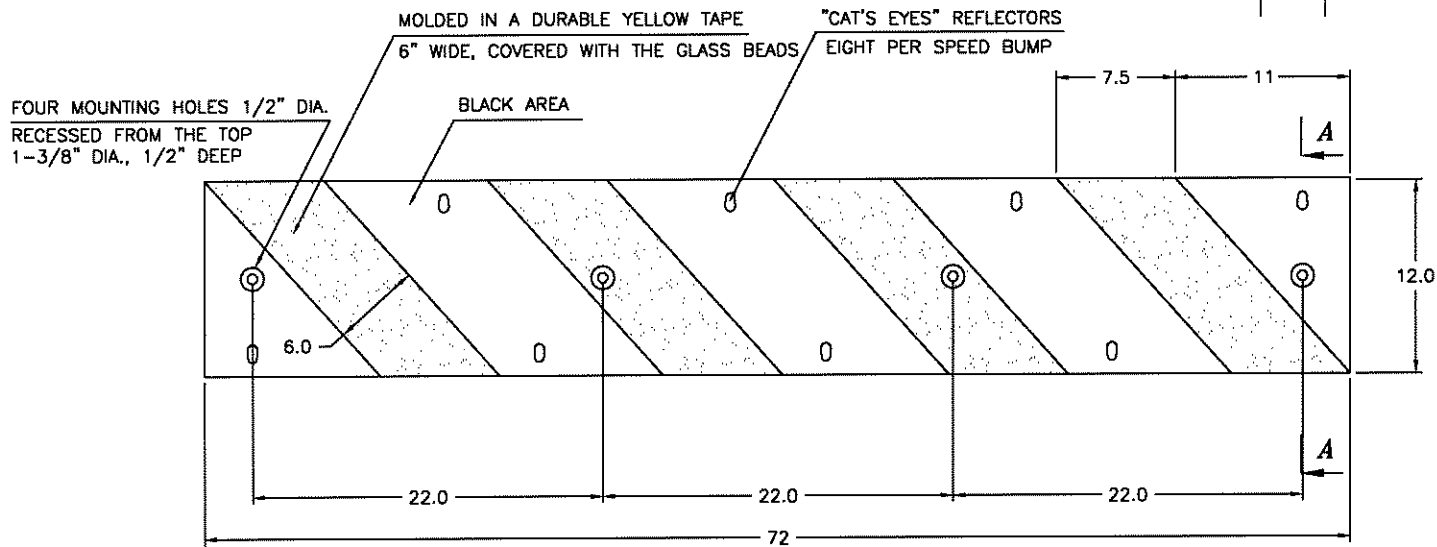
Product information sheet

- Product Name:** **Rubber Speed Bumps**
- Models:** 6', 4' long
- Manufacturer:** GNR Technologies Inc., manufacturing division of Traffic Logix Inc.
990 Upton, Lasalle, QC H8R 2T9
Tel.: (514) 366-6116, Fax: (514) 366-6440
- Product Description:**
1. Material: compression molded composite of the 100% recycled rubber and polyurethane prepolymer
 2. Physical properties of the rubber composite:
 - a) Density 0.6 oz/cu in (ASTM C642)
 - b) Durometer Hardness 70A ± 7 (ASTM D2240)
 - c) Tensile Strength 300 psi (ASTM D412)
 - d) Compression deformation 7% at 70psi, 68°F (ASTM D575)
 - e) Brittleness at Low temperature: -40°F (ASTM D746)
 - f) Freeze and thaw when exposed to deicing chemicals no loss after 50 cycles (ASTM C672)
 - f) Coefficient of thermal expansion: 8×10^{-5} in/in/°F (ASTM C531)
 - g) Weathering 70 hours at 158°F (ASTM D573)
 - hardness retained 100% (± 5%)
 - compressive strength 100% (± 5%)
 - tensile strength 100% (± 5%)
 - elongation retained 100% (± 5%)
 3. Available models: 6', 4' long
 4. Basic dimensions and nominal weights as per attached drawings
 5. Finishing: Black with durable reflective yellow tape as per attached drawings
- Installation method:** installation with spikes 14" long (minimum diameter ½")
- 4 spikes for 6' model
 - 3 spikes for 4' model
- Components:**
- a) 100% recycled rubber from car and truck tires (NR, SBR)
 - b) polyurethane prepolymer for rubber granules
 - c) cat's eyes reflectors
 - d) molded in a durable yellow, reflective tape covered with the glass beads
- Attached Drawings:** 6' model, drawing No. 6SB01-1
4' model, drawing No. 4SB01-1
14" rebar spike, drawing No. 05SP01

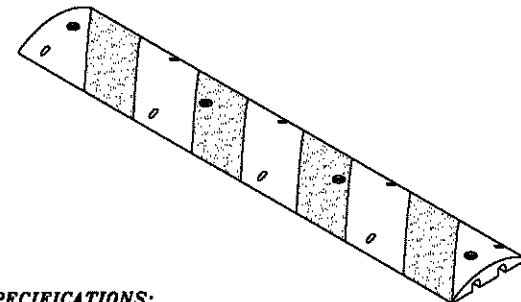
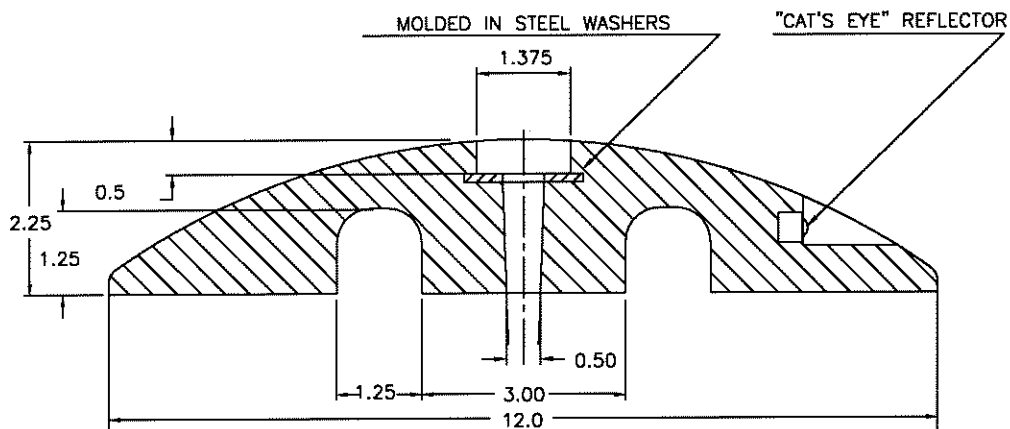
Easy Rider

TOP VIEW

REVISIONS		
REV.	DESCRIPTION	DATE



SECTION A-A



PRODUCT SPECIFICATIONS:

1. MATERIAL: COMPRESSION MOLDED RECYCLED RUBBER COMPOSITE
2. NOMINAL DIMENSIONS: 72"L x 12"W x 2.25"H
3. FOUR MOUNTING HOLES 1/2" DIA. (RECESSED 1-3/8" DIA. AND 1/2" DEEP, TO ACCOMMODATE SPIKE'S HEAD) ARE PROVIDED FOR INSTALLATION WITH SPIKES OR LAG BOLTS
4. MOLDED DURABLE, YELLOW AND REFLECTIVE PREFORMED PAVEMENT MARKING TAPE (ASTM D4061), 6" WIDE, COVERED WITH GLASS BEADS, PROVIDES GOOD VISIBILITY DURING DAY AND NIGHT
5. EIGHT "CAT'S EYES" REFLECTORS (FOUR PER SIDE) PROVIDE ADDITIONAL REFLECTIVITY AT NIGHT
6. WEIGHT OF THE PRODUCT: 76 lbs.

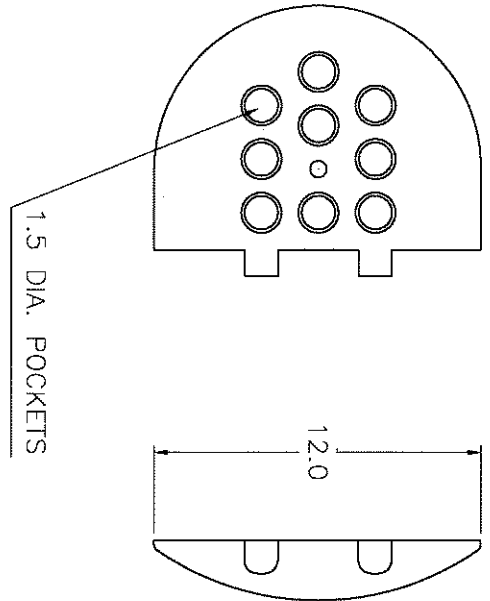
DRAWN		DATE		SCALE		DWG NO.		SIZE	
				1=6		6SB01-1			C
CHECKED		DATE		MATERIAL		SHEET			
DESIGN		DATE							

UNLESS OTHERWISE SPECIFIED :
DIMENSIONS ARE IN INCHES
TOLERANCES

DECIMALS	ANGULAR
.x ± 1/8"	±.05°
.xx ± 1/16"	

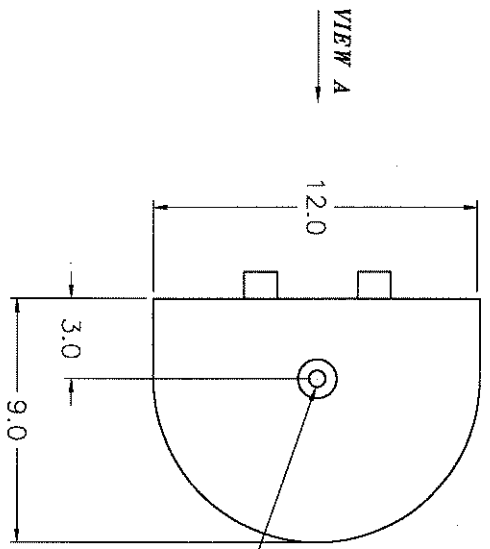
RUBBER SPEED BUMP
6 FT. MODEL, 2.25" THICK

BOTTOM VIEW



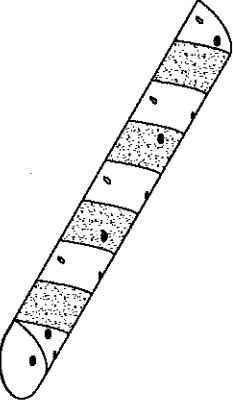
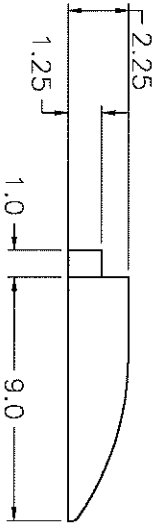
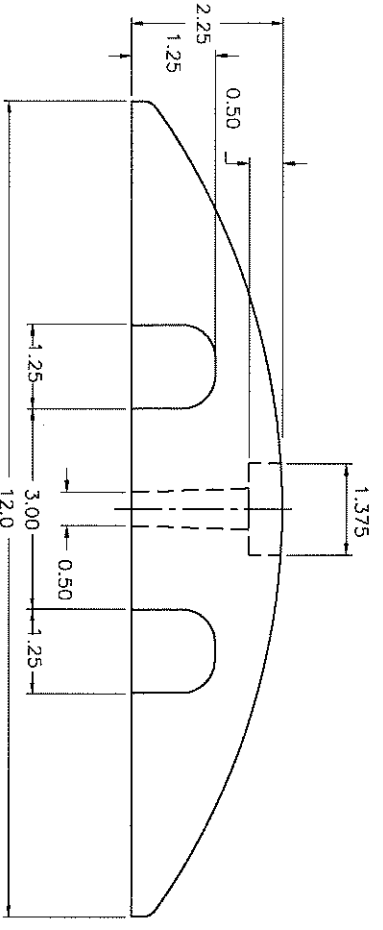
1.5 DIA. POCKETS

BOTTOM VIEW



MOUNTING HOLE 1/2" DIA.
RECESSED FROM THE TOP
1-3/8" DIA., 1/2" DEEP

VIEW A



PRODUCT SPECIFICATIONS:

1. MATERIAL: COMPRESSION MOLDED RECYCLED RUBBER COMPOSITE
2. DIMENSIONS: 9" L x 12" W x 2.25" H
3. ONE MOUNTING HOLE 1/2" DIA. (RECESSED 1-3/8" DIA. AND 1/2" DEEP, TO ACCOMMODATE A WASHER OR SPIKE'S HEAD) ARE PROVIDED FOR INSTALLATION WITH SPIKES OR HILTI ANCHORS
4. COLOR: BLACK
5. WEIGHT OF THE PRODUCT: 6.5 lbs.

REVISIONS

REV.	DESCRIPTION	DATE	APPROVED

GNR TECHNOLOGIES INC.

END CAP

FOR THE RUBBER SPEED BUMPS 2.25" THICK

DESIGN	S. JONASZ	DATE	MAR.13/99	MATERIAL		SHEET		SIZE	C
CHECKED	S. JONASZ	DATE	MAR.13/99	SCALE	1=4	DWG NO.	ECSB01-1		
DRAWN	S. JONASZ	DATE	MAR.13/99						

THIS DRAWING IS THE PROPERTY OF GNR TECHNOLOGIES INC. AND WILL NOT BE REPRODUCED, PARASITIC, INCORPORATED TO OTHER DRAWINGS OR USED FOR ANY OTHER PURPOSES WITHOUT WRITTEN PERMISSION FROM GNR TECHNOLOGIES INC.