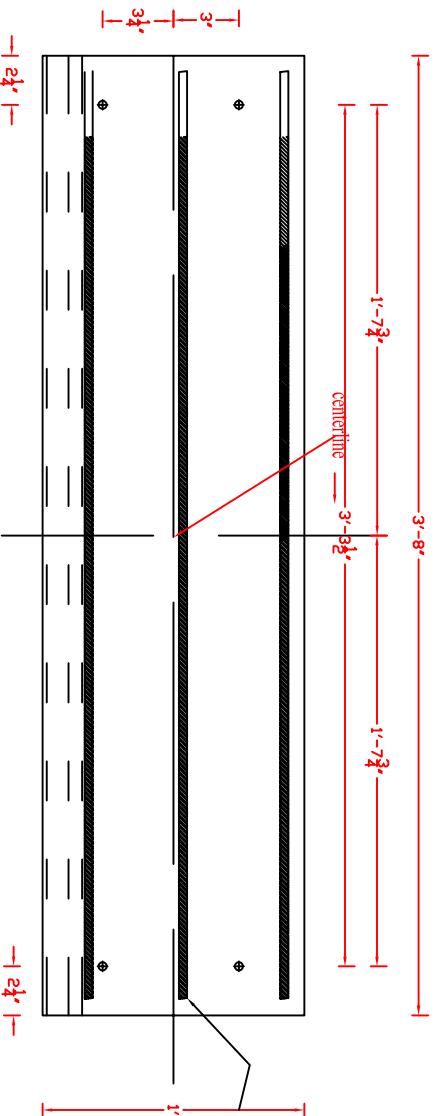
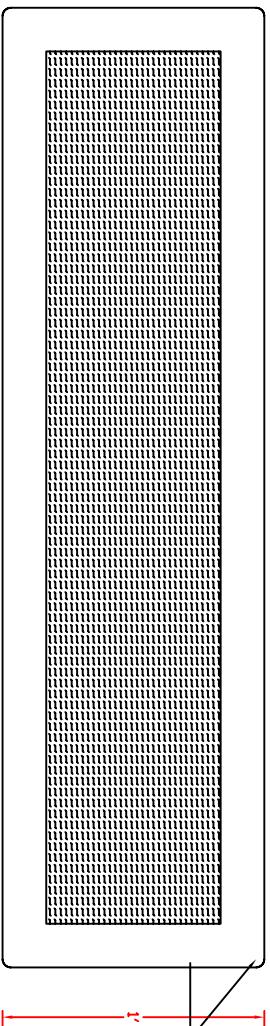


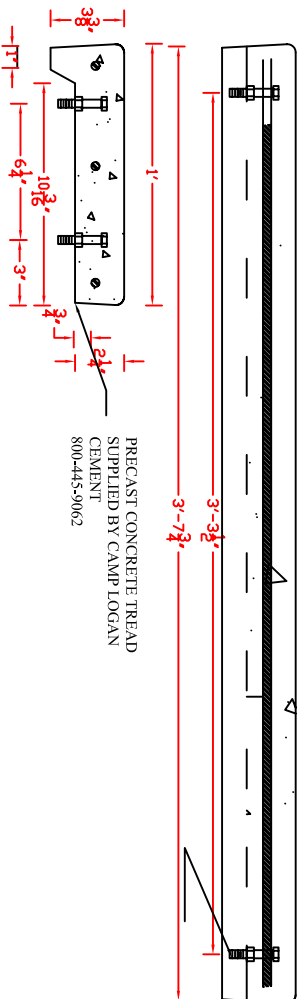
Product Code 1244TBLIP  
 12"x44"x 2 1-4" Step Tread Broom Finish w/ lip w/ 3/8" Bolts  
 Camp Logan Cement Works Inc.  
 www.camplogancement.com  
 800-445-9062  
 clcw@camplogancement.com



3 PIECES OF #3 REBAR  
 EMBEDDED 3/4" IN TREAD



BRUSH FINISH W/  
 2" EDGING ON  
 SIDES  
 AND A 3/8" RADIUS



PRECAST CONCRETE TREAD  
 SUPPLIED BY CAMP LOGAN  
 CEMENT  
 800-445-9062

3/8" BOLTS ENCASED IN  
 CONCRETE W/ SUPPORT  
 NUT