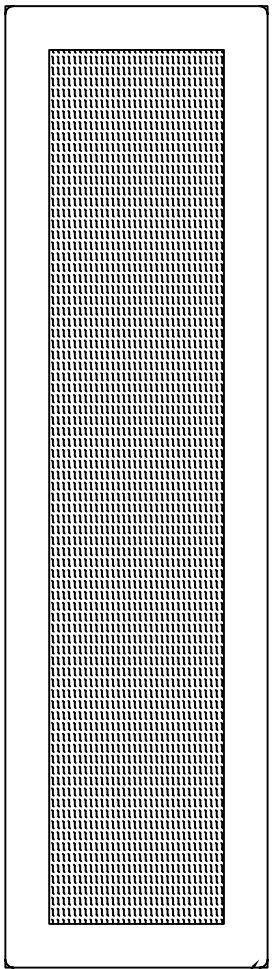
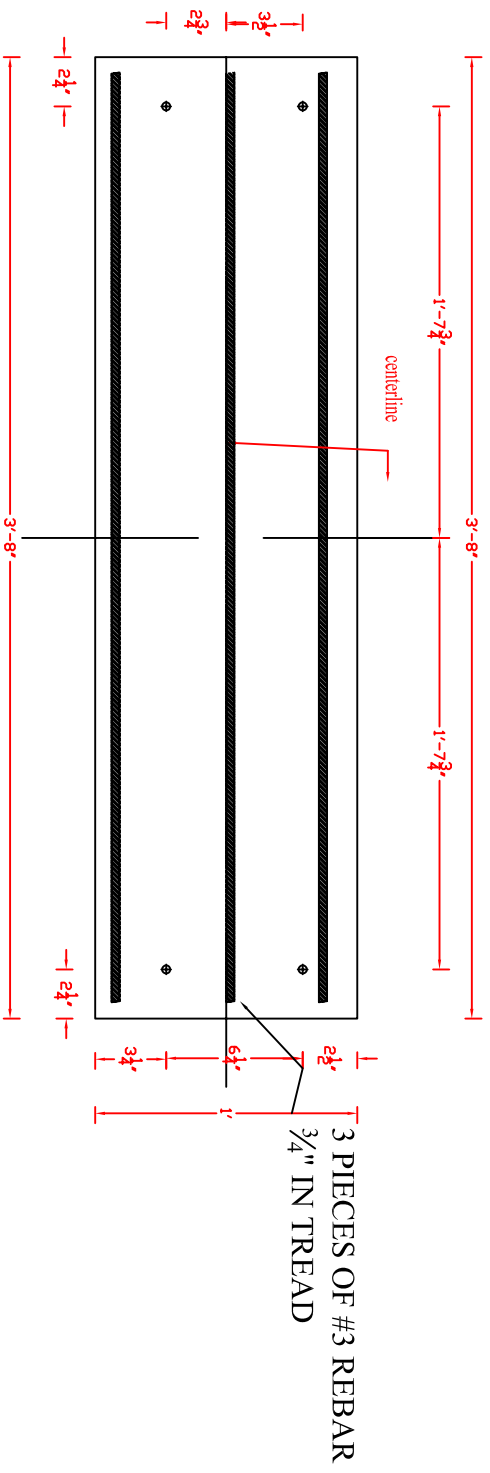
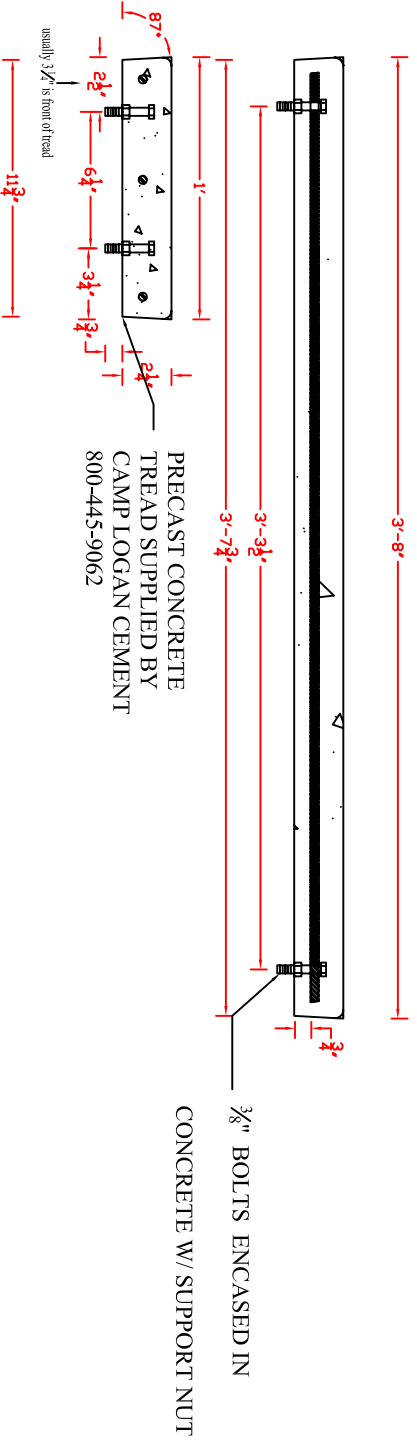


Product Code 1244TB
 12"x44" x 2 1-4" Step Tread Broom Finish with 3/8" Bolts
 Camp Logan Cement Works Inc.
 www.camplogancement.com
 800-445-9062
 clcw@camplogancement.com



BRUSH FINISH W/
 2" EDGING ON
 SIDES
 AND A 3/8"
 RADIUS



3/8" BOLTS ENCASED IN
 CONCRETE W/ SUPPORT NUT

PRECAST CONCRETE
 TREAD SUPPLIED BY
 CAMP LOGAN CEMENT
 800-445-9062

usually 3/2" is front of tread