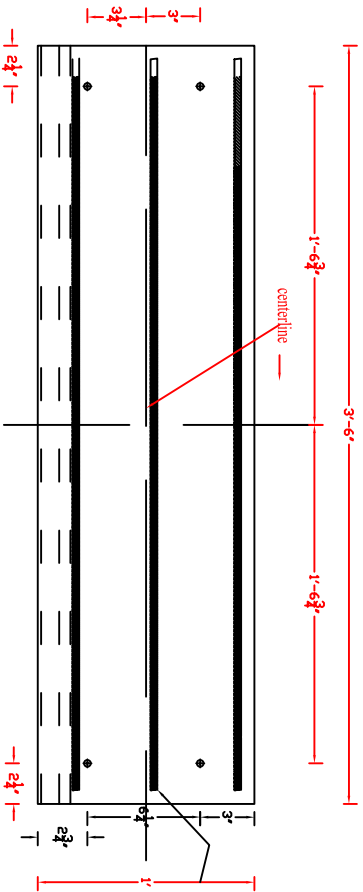
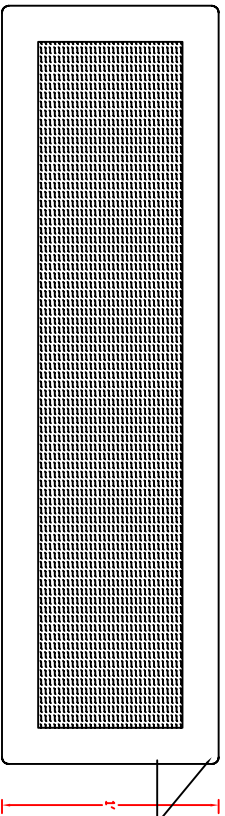


Product Code 1242TBLIP
 12"x42"x 2 1/4" Step Tread Broom Finish w/ lip w/ 3/8" Bolts
 Camp Logan Cement Works Inc.
 www.camplogacement.com
 800-445-9062
 clew@camplogacement.com

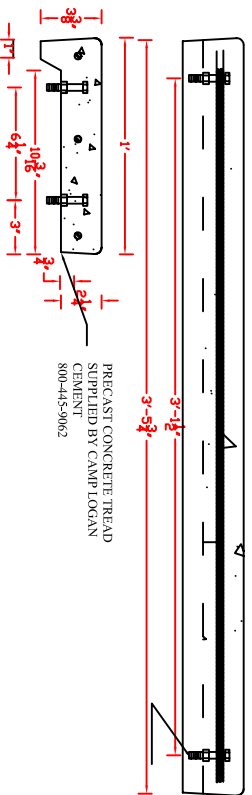
All dimensions based on centerline projections



3 PIECES OF #3 REBAR GRADE 40
 EMBEDDED 3/4" IN TREAD



BRUSH FINISH W/
 2" EDGING ON
 SIDES
 AND A 3/8" RADIUS



PRECAST CONCRETE TREAD
 SUPPLIED BY CAMP LOGAN
 CEMENT
 800-445-9062

3/8" BOLTS ENCASED IN
 CONCRETE W/ SUPPORT
 NUT

All dimensions based on centerline projections