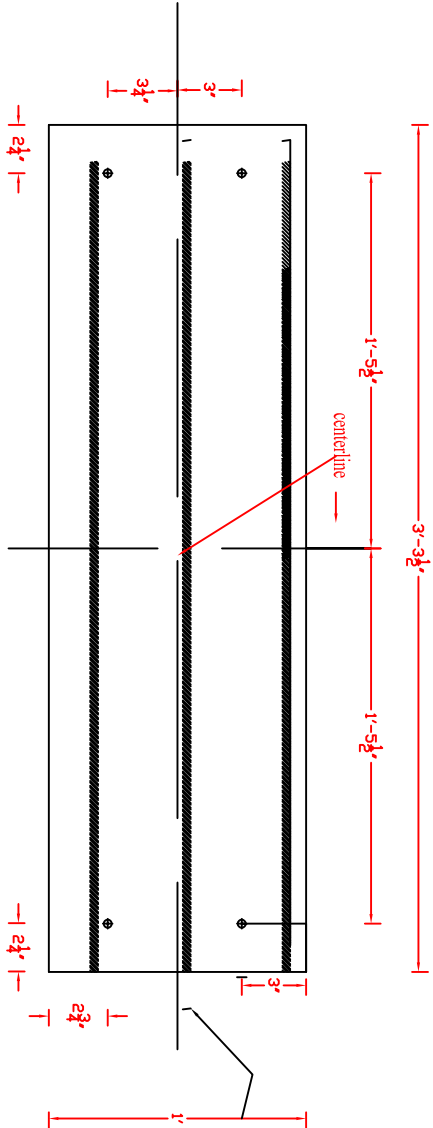
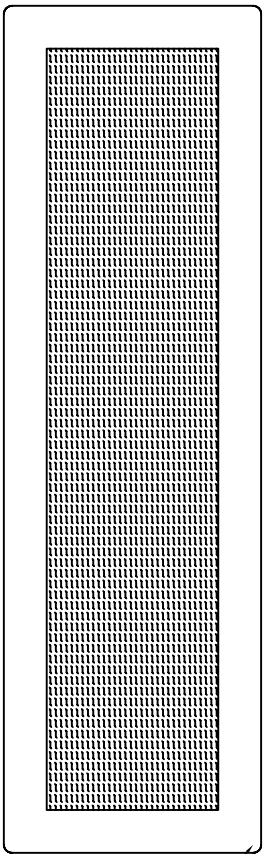


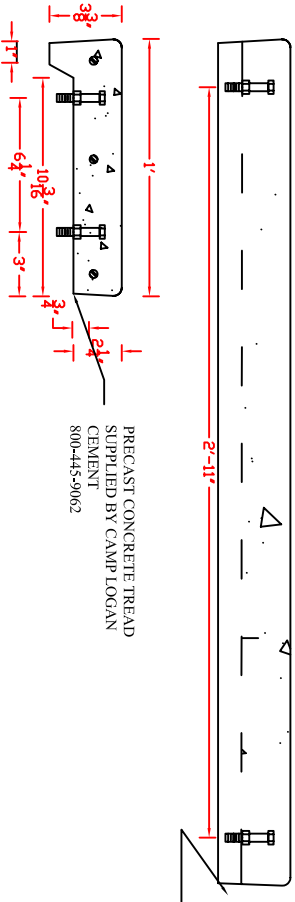
Product Code 12395TBLIP  
 12"x39, 5"x2 1/4" Step Tread Broom Finish w/ lip w/ 3/8" Bolts  
 Camp Logan Cement Works Inc.  
 www.camplogancement.com  
 800-445-9062  
 clcw@camplogancement.com



3 PIECES OF #3 REBAR  
 EMBEDDED 3/4" IN TREAD



BRUSH FINISH W/ 2"  
 EDGING ON SIDES  
 AND 3/8" RADIUS



3/8" BOLTS ENCASED IN  
 CONCRETE W/ SUPPORT  
 NUT

PRECAST CONCRETE TREAD  
 SUPPLIED BY CAMP LOGAN  
 CEMENT  
 800-445-9062