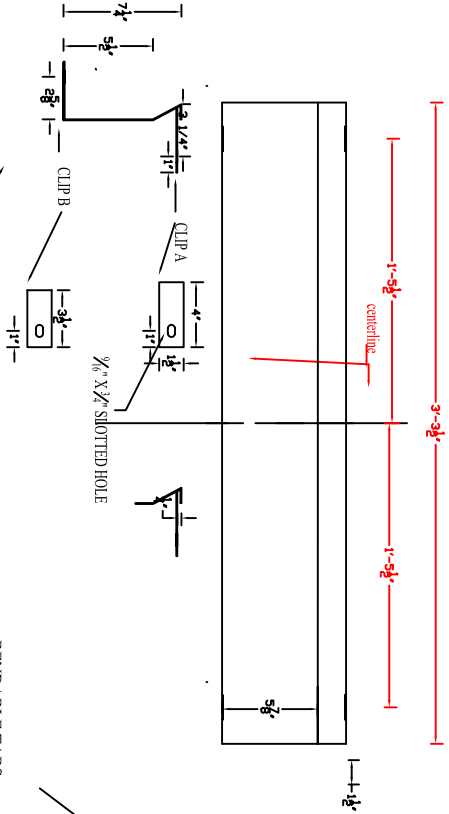


Product Code 395CL-STEEL
 39 1/2" 14 GAUGE STEEL CLOSED RISER POWDER COATED GREY
 Camp Logan Cement Works Inc.
 www.camplogancement.com
 800-445-9062
 clew@camplogancement.com

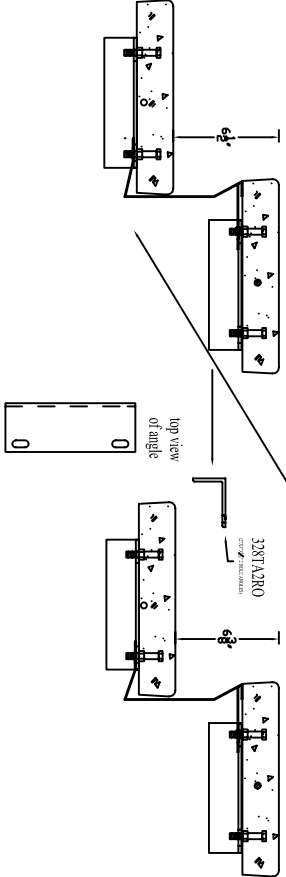
CLOSED RISERS

Camp Logan's closed risers are subjected to a thorough cleaning and zinc-phosphate pretreatment. And they undergo an extensive and proven multi-step powder coating process, including a polyester powder coating, to provide a beautiful scratch and scuff resistant, anti-rust free surface.

- Eliminate hassle of transporting parts
- Environmental accountability
- Help save and managing cost of operations
- Quality finish: Multi stage pretreatment zinc primed and glossy polyester powder coat.
- Standard color gray or black
- High quality 16 gauge steel
- Weight per tread along with riser is 90 lbs



BENDABLE TABS - ALLOWS FOR RISERS FROM 6" TO 7" BOLT ON TO STRINGER AND DONE



TOP VIEW

